

OWNERS CERTIFICATION

THE PROPERTY SHOWN HEREON IS ALL OF THE CONVEYANCE FROM JESSIE L. ADAMS ET AL. TO TEAFALGAR INVESTMENTS INC. BY DEED DATED JUNE 19, 1981 AND RECORDED AMONG THE LAND RECORDS OF ANNE ARUNDEL COUNTY, MD. IN LIBER 3417 FOLIO 414. THE REQUIREMENTS OF TITLE 3, SECTION 3-10B OF THE REAL PROPERTY ARTICLE OF THE ANNOTATED CODE OF MD., 1980 CUMULATIVE SUPPLEMENT, AS FAR AS THEY RELATE TO THE MAKING OF THIS PLAT AND THE SETTING OF MARKERS HAVE BEEN COMPLIED WITH TO THE BEST OF MY KNOWLEDGE. THIS PLAT CONSISTS OF 10 SHEETS.

Ernest L. Bell 12/11/81
TEAFALGAR INVESTMENTS INC. DATE:

THIS PLAT IS A CONVERSION OF EXISTING RENTAL UNITS BUILT IN APPROXIMATELY 1962 AND THE LAND SHOWN HEREON CONSISTS OF LOT NUMBERS 1 THRU 8, 19, 10, 12, 14, 16, 17, 18 THRU 22 AND FORMER PART OF CEDAR AVE. AS SHOWN ON THE PLAT OF CEDAR PARK, RECORDED AMONG THE PLAT RECORDS OF ANNE ARUNDEL COUNTY, MD. IN PLAT BOOK 12, PAGE 1.

SURVEYORS CERTIFICATE

I HEREBY CERTIFY THAT THIS PLAT OF CONDOMINIUM REGIME IS IN ACCORDANCE WITH THE REQUIREMENTS OF TITLE XI SECTIONS 11-101 ET SEQ. AND TITLE 3 SECT. 3-10B OF THE REAL PROPERTY ARTICLE OF THE ANNOTATED CODE OF MARYLAND, 1980 CUMULATIVE SUPPLEMENT, AS FAR AS THEY RELATE TO THE MAKING OF THIS PLAT AND THE SETTING OF MARKERS, AND THAT THE PLAT TOGETHER WITH THE APPLICABLE WORDING OF THE DECLARATION IS A CORRECT REPRESENTATION OF THE CONDOMINIUM DESCRIBED, AND THAT THE IDENTIFICATION AND LOCATION OF EACH UNIT AND THE COMMON ELEMENTS, AS CONSTRUCTED, CAN BE DETERMINED BY THEM. THIS PLAT CONSISTS OF 10 SHEETS.

Ernest L. Bell 12/15/81
ERNEST L. BELL
REGISTERED LAND SURVEYOR
MD.#8436 DATE



DUTCH GLEN CONDOMINIUM

CITY OF ANNAPOLIS
6TH DISTRICT A.A.CO., MARYLAND
SCALE: 1" = 40' SEPT., 1981

PREPARED BY
J.R. McCrone Jr., Inc.
REGISTERED PROFESSIONAL ENGINEERS AND LAND SURVEYORS
ANNAPOLIS, MARYLAND
RECORDED IN PLAT BOOK E-20 PAGE 34 SHEET 1 OF 10

NOTE:
DIMENSIONS AND AREAS INDICATED HEREIN ARE "AS CONSTRUCTED" TO AN ACCURACY CONSIDERED SUFFICIENT TO IDENTIFY THE PERIMETERS OF A UNIT WITH REASONABLE CERTAINTY.

No.	LATITUDE	DEPARTURE
9	23,497.55	22,579.67
10	23,756.10	22,633.04
11	23,664.69	23,075.86
12	23,437.82	22,863.04

LEGEND

- ----- CLEANOUT
- ⊙ ----- DRAIN PIPE
- ⊞ ----- GAS VALVE
- ==== CONCRETE SWALE
- ☼ ----- LIGHT POLE
- ⊞ ----- ELECTRICAL BOX
- ▬ ----- CONCRETE WALL
- ⊙ ----- TELEPHONE POLE
- ⊙ ----- SEWER MANHOLE
- ⊙ ----- WATER VALVE
- ⊙ ----- FIRE HYDRANT
- ▬ ----- CURB LINE
- ▬ ----- CONCRETE SIDEWALK
- ▬ ----- CHAIN LINK FENCE

○ INDICATES COORDINATE NUMBER

ACREAGE OF THE CONDOMINIUM SHOWN ON THIS SHEET IS 2.26 AC.
TOTAL ACREAGE OF DUTCH GLEN CONDOMINIUM IS 4.13 ACRES.

EXISTING AIR CONDITIONER UNITS LOCATED OUTSIDE THE CONDOMINIUM UNITS ARE NOT LOCATED. SEE CONDOMINIUM DECLARATION.

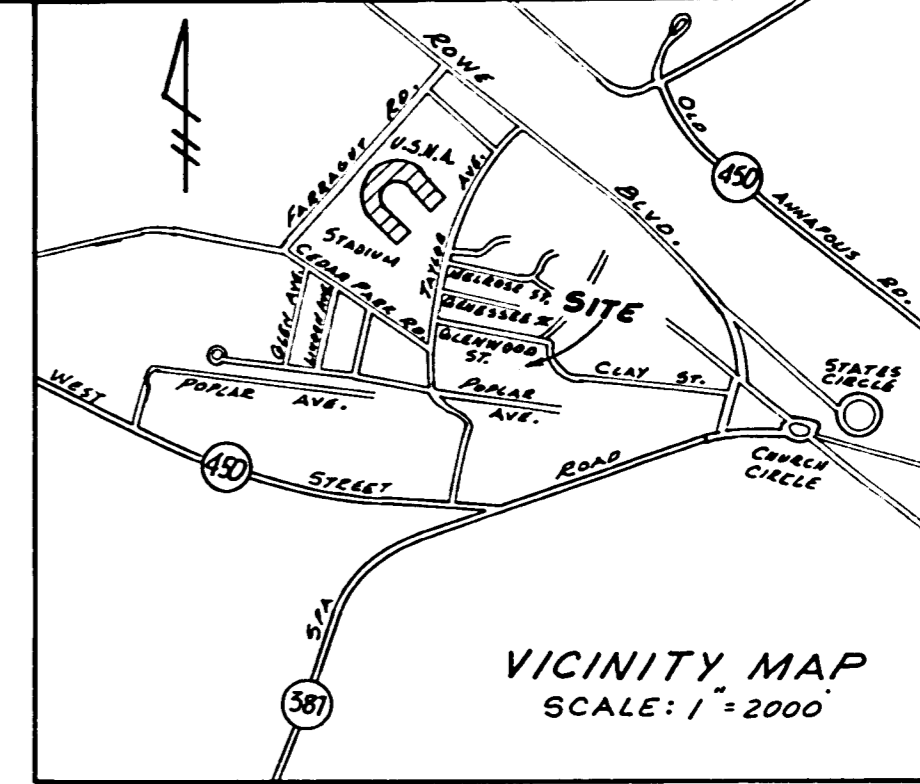
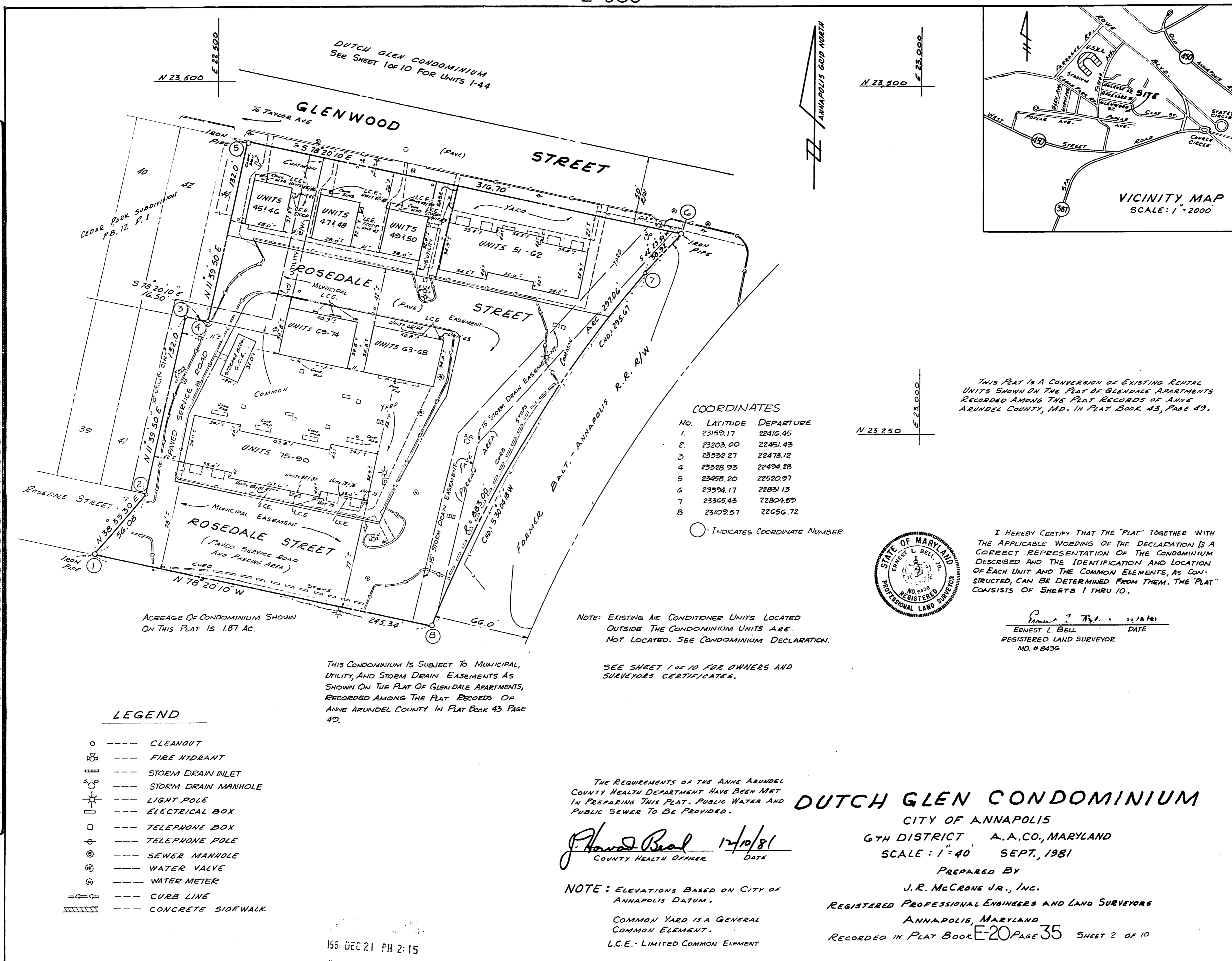
THE REQUIREMENTS OF THE ANNE ARUNDEL COUNTY HEALTH DEPARTMENT HAVE BEEN MET IN PREPARING THIS PLAT. PUBLIC WATER AND PUBLIC SEWER TO BE PROVIDED.

J. Howard Reed 12/10/81
COUNTY HEALTH OFFICER DATE APPROVED

NOTE: ELEVATIONS BASED ON CITY OF ANNAPOLIS DATUM.

COMMON YARD IS A GENERAL COMMON ELEMENT.
L.C.E. - LIMITED COMMON ELEMENT

NO RECORD PH 2-12



THIS PLAT IS A CONVERSION OF EXISTING RENTAL UNITS SHOWN ON THE PLAT OF GLENDALE APARTMENTS RECORDED AMONG THE PLAT RECORDS OF ANNE ARUNDEL COUNTY, MD. IN PLAT BOOK 43, PAGE 49.

COORDINATES

No.	LATITUDE	DEPARTURE
1	23152.17	22416.45
2	23203.00	22451.43
3	23332.27	22478.12
4	23328.93	22494.28
5	23458.20	22520.97
6	23394.17	22831.13
7	23365.43	22804.89
8	23109.57	22656.72

○ INDICATES COORDINATE NUMBER

I HEREBY CERTIFY THAT THE "PLAT" TOGETHER WITH THE APPLICABLE WORDING OF THE DECLARATION IS A CORRECT REPRESENTATION OF THE CONDOMINIUM DESCRIBED AND THE IDENTIFICATION AND LOCATION OF EACH UNIT AND THE COMMON ELEMENTS, AS CONSTRUCTED, CAN BE DETERMINED FROM THEM. THE "PLAT" CONSISTS OF SHEETS 1 THRU 10.



Ernest L. Bell 12/10/81
 ERNEST L. BELL DATE
 REGISTERED LAND SURVEYOR
 MD. # 8436

NOTE: EXISTING AIR CONDITIONER UNITS LOCATED OUTSIDE THE CONDOMINIUM UNITS ARE NOT LOCATED. SEE CONDOMINIUM DECLARATION.

SEE SHEET 1 OF 10 FOR OWNERS AND SURVEYORS CERTIFICATES.

THIS CONDOMINIUM IS SUBJECT TO MUNICIPAL, UTILITY, AND STORM DRAIN EASEMENTS AS SHOWN ON THE PLAT OF GLENDALE APARTMENTS, RECORDED AMONG THE PLAT RECORDS OF ANNE ARUNDEL COUNTY IN PLAT BOOK 43 PAGE 49.

LEGEND

- --- CLEANOUT
- ⊕ --- FIRE HYDRANT
- ⊕ --- STORM DRAIN INLET
- ⊕ --- STORM DRAIN MANHOLE
- ⊕ --- LIGHT POLE
- ⊕ --- ELECTRICAL BOX
- ⊕ --- TELEPHONE BOX
- ⊕ --- TELEPHONE POLE
- ⊕ --- SEWER MANHOLE
- ⊕ --- WATER VALVE
- ⊕ --- WATER METER
- --- CURB LINE
- ▨ --- CONCRETE SIDEWALK

THE REQUIREMENTS OF THE ANNE ARUNDEL COUNTY HEALTH DEPARTMENT HAVE BEEN MET IN PREPARING THIS PLAT. PUBLIC WATER AND PUBLIC SEWER TO BE PROVIDED.

J. Howard Beal 12/10/81
 COUNTY HEALTH OFFICER DATE

NOTE: ELEVATIONS BASED ON CITY OF ANNAPOLIS DATUM.

COMMON YARD IS A GENERAL COMMON ELEMENT.
 L.C.E. - LIMITED COMMON ELEMENT

DUTCH GLEN CONDOMINIUM

CITY OF ANNAPOLIS
 6TH DISTRICT A.A.CO., MARYLAND
 SCALE: 1" = 40' SEPT, 1981

PREPARED BY
 J.R. McCrone Jr., Inc.
 REGISTERED PROFESSIONAL ENGINEERS AND LAND SURVEYORS
 ANNAPOLIS, MARYLAND
 RECORDED IN PLAT BOOK E-20 PAGE 35 SHEET 2 OF 10

1981 DEC 21 PM 2:15