

CURVE DATA					
NO.	RADIUS	TAN.	CHORD	DELTA	CHD. BEARING
1	151.70	72.84	171.12	113.32	S 50° 10' 45" W
2	181.70	90.85	211.19	127.11	N 63° 02' 41" W
3	172.99	86.64	204.93	120.02	S 52° 02' 41" W
4	172.99	86.64	204.93	120.02	N 63° 02' 41" W
5	410.51	205.25	466.16	141.85	S 30° 22' 16" W
6	410.51	205.25	466.16	141.85	N 63° 02' 41" W
7	50.00	25.00	50.00	90.00	S 64° 23' 00" E
8	148.02	74.01	164.02	102.00	S 22° 10' 45" W

COORDINATES		
NO.	LATITUDE	DEPARTURE
1-A	23795.30	23010.95
2-A	23993.79	23031.27
3-A	24026.38	22875.65
4-A	24011.03	23205.77

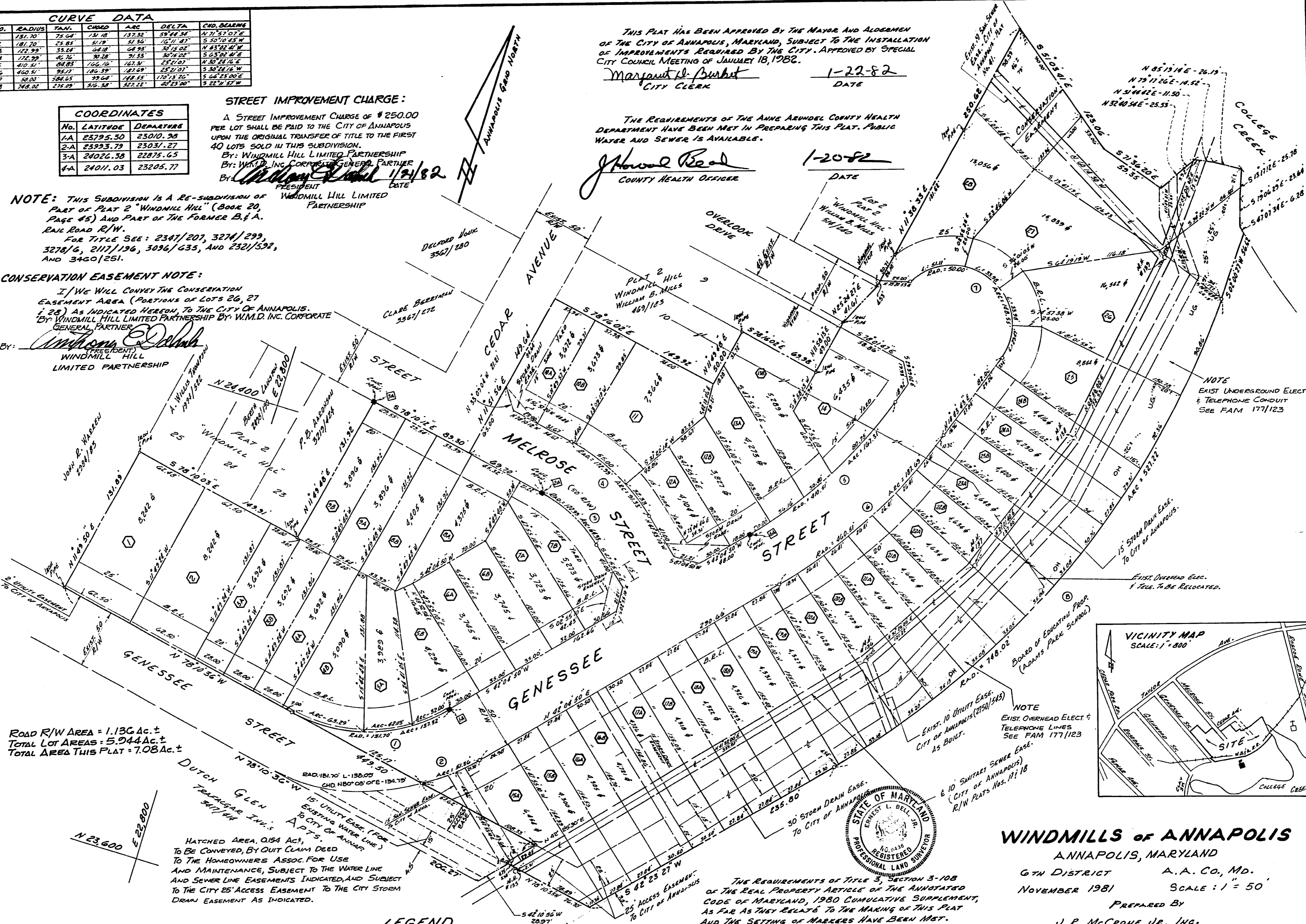
**STREET IMPROVEMENT CHARGE:**  
 A STREET IMPROVEMENT CHARGE OF \$250.00 PER LOT SHALL BE PAID TO THE CITY OF ANNAPOLIS UPON THE ORIGINAL TRANSFER OF TITLE TO THE FIRST 40 LOTS SOLD IN THIS SUBDIVISION.  
 BY: WINDMILL HILL LIMITED PARTNERSHIP  
 BY: W.M.D. INC. CORPORATE GENERAL PARTNER  
 BY: *William E. Dulak* 12/1/82  
 PRESIDENT DATE

**NOTE:** THIS SUBDIVISION IS A RE-SUBDIVISION OF PART OF PLAT 2 "WINDMILL HILL" (BOOK 20, PAGE 45) AND PART OF THE FORMER B. & A. RAIL ROAD R/W.  
 FOR TITLE SEE: 2347/207, 3274/299, 3278/6, 2117/196, 3036/635, AND 2321/592, AND 3460/251.

**CONSERVATION EASEMENT NOTE:**  
 I/WE WILL CONVEY THE CONSERVATION EASEMENT AREA (PORTIONS OF LOTS 26, 27 & 28) AS INDICATED HERON, TO THE CITY OF ANNAPOLIS, BY WINDMILL HILL LIMITED PARTNERSHIP BY W.M.D. INC. CORPORATE GENERAL PARTNER.  
 BY: *William E. Dulak*  
 PRESIDENT  
 WINDMILL HILL LIMITED PARTNERSHIP

THIS PLAT HAS BEEN APPROVED BY THE MAYOR AND ALDERMEN OF THE CITY OF ANNAPOLIS, MARYLAND, SUBJECT TO THE INSTALLATION OF IMPROVEMENTS REQUIRED BY THE CITY. APPROVED BY SPECIAL CITY COUNCIL MEETING OF JANUARY 18, 1982.  
*Margaret L. Burbit*  
 CITY CLERK  
 DATE 1-22-82

THE REQUIREMENTS OF THE ANNE ARUNDEL COUNTY HEALTH DEPARTMENT HAVE BEEN MET IN PREPARING THIS PLAT. PUBLIC WATER AND SEWER IS AVAILABLE.  
*John W. Reed*  
 COUNTY HEALTH OFFICER  
 DATE 1-20-82



ROAD R/W AREA = 1.136 AC. ±  
 TOTAL LOT AREAS = 5.944 AC. ±  
 TOTAL AREA THIS PLAT = 7.08 AC. ±

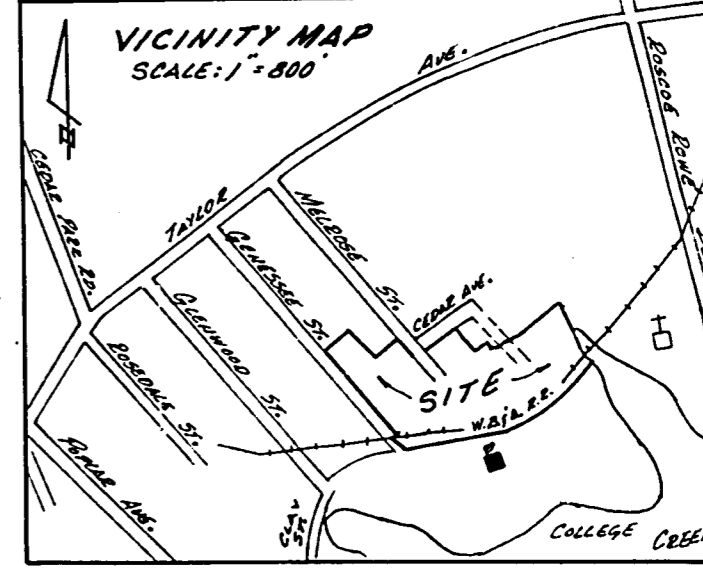
HATCHED AREA, 0.154 AC. ±, TO BE CONVEYED, BY QUIT CLAIM DEED TO THE HOMEOWNERS ASSOC. FOR USE AND MAINTENANCE, SUBJECT TO THE WATER LINE AND SEWER LINE EASEMENTS INDICATED, AND SUBJECT TO THE CITY 25' ACCESS EASEMENT TO THE CITY STORM DRAIN EASEMENT AS INDICATED.

- LEGEND**
- INDICATES LOT NUMBER
  - INDICATES CURVE NUMBER
  - B.R.L. INDICATES BUILDING RESTRICTION LINE

APPROVED: 1/21/82  
 DATE  
*John E. Calabrese*  
 DIRECTOR OF PLANNING & ZONING  
 CITY OF ANNAPOLIS, MD.

APPROVED: 1/22/82  
 DATE  
*Carol Barrett*  
 DIRECTOR OF PLANNING & ZONING  
 CITY OF ANNAPOLIS, MD.

THE REQUIREMENTS OF TITLE 3, SECTION 3-108 OF THE REAL PROPERTY ARTICLE OF THE ANNOTATED CODE OF MARYLAND, 1980 CUMULATIVE SUPPLEMENT, AS FAR AS THEY RELATE TO THE MAKING OF THIS PLAT AND THE SETTING OF MARKERS HAVE BEEN MET.  
 BY: *William E. Dulak* 12/3/81  
 PRESIDENT DATE  
*Ernest C. Bell* 12/3/81  
 REGISTERED PROFESSIONAL LAND SURVEYOR MARYLAND CERTIFICATE # 8636



**WINDMILLS OF ANNAPOLIS**  
 ANNAPOLIS, MARYLAND  
 6TH DISTRICT A.A. CO., MD.  
 NOVEMBER 1981 SCALE: 1" = 50'  
 PREPARED BY  
 J. R. McCRONE JR., INC.  
 REGISTERED PROFESSIONAL ENGINEERS AND LAND SURVEYORS  
 ANNAPOLIS, MARYLAND

RECORDED IN PLAT BOOK 85 PAGE 5 SHEET  
 MSAS3K1335-1004

6-10-152